

POLICY

BOARD OF EDUCATION FRANKLIN BOROUGH

ADMINISTRATION
1110 / Page 1 of 1
Organizational Chart
Dec 97
Jul 07

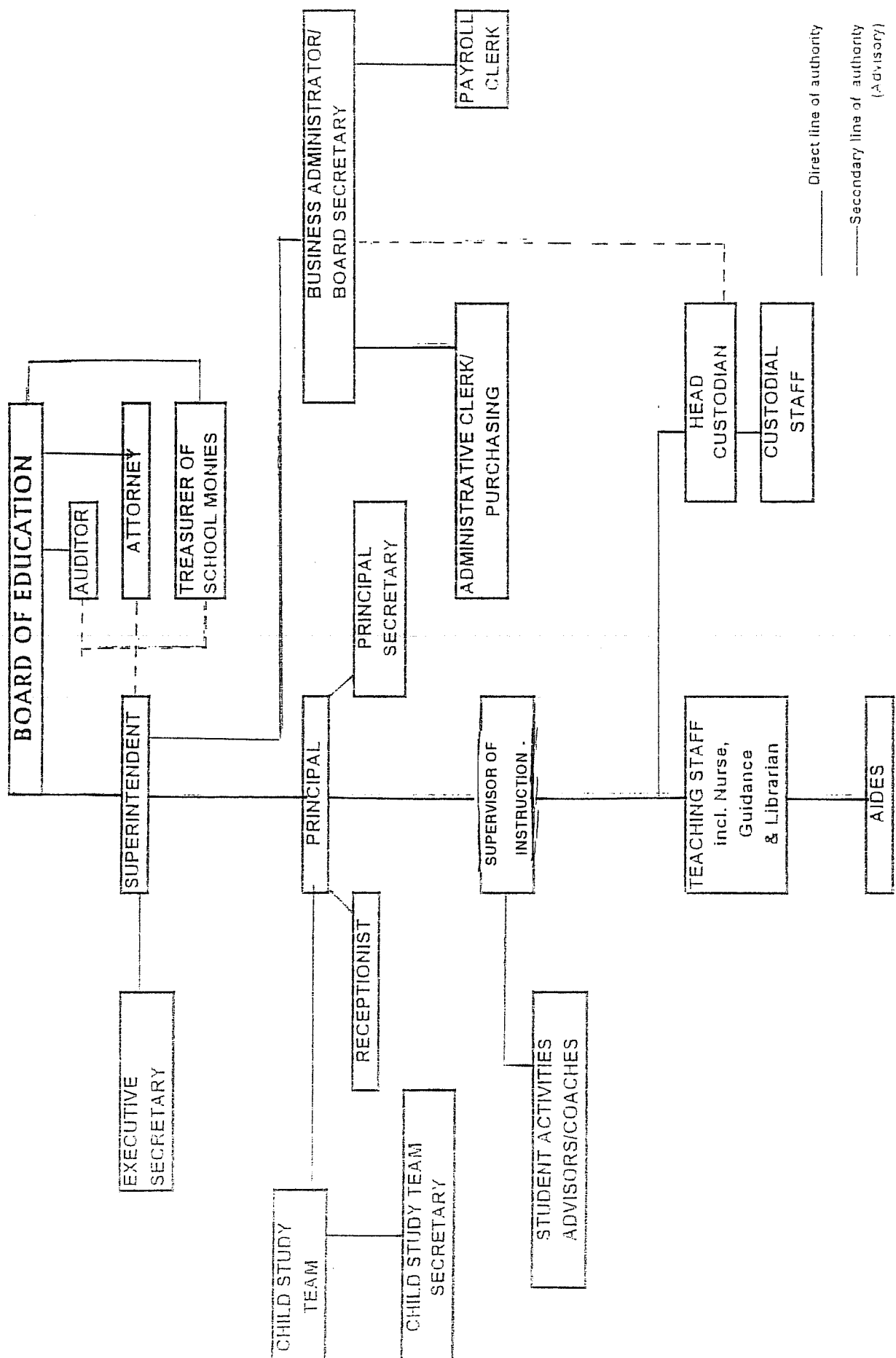
It is the policy of the Board that the schools of this district shall operate under the supervisory system known as "Unit Control." All matters related to school operations shall be under the control of the Superintendent except where the law designates that responsibility to others.

In the absence or disability of the Superintendent, the Principal shall act instead. Should both administrators be unavailable, the Supervisor of Instruction shall act.

Date Adopted: 2/16/76

Date Revised: 4/9/84, 1/16/89, 12/18/97, 7/23/07

Organization Chart



_____ Direct line of authority
 - - - - - Secondary line of authority (Advisory)